

# ANNEXURE-10

## Mandatory Disclosures

- 1. Name of the Institution**
  - SCHOOL OF ENGINEERING
  - COCHIN UNIVERSITY OF SCIENCE AND TECHNOLOGY
  - KALAMASSERY, **Kochi-22**
  - PIN- 682022
  - TELEPHONE : 0484-2862030
  - EMAIL ID: principal\_soe@cusat.ac.in
- 2. Name and address of the Trust/ Society/ Company and the Trustees**
  - **Government Institution**
- 3. Name and Address of the ~~Vice-Chancellor~~/ Principal/Director**

Head	Name	Phone Number	Mobile Number	E-mail address
Principal	Prof.(Dr.) Dipak Kumar Sahoo	0484-2862030	+91 9496215851	<a href="mailto:principal_soe@cusat.ac.in">principal_soe@cusat.ac.in</a>

- 4. Name of the affiliating University**  
Constituent Department under the “Cochin University of Science and Technology”.
- 5. Governance**

### **1. MEMBERS OF THE BOARD AND THEIR BRIEF BACKGROUND**

Syndicate, Academic Council and Senate are the Principal Authorities of the University. Syndicate is the Chief Executive Body which meets every month.

#### **Syndicate**

The Syndicate is the chief executive body of the University comprising seventeen members and presided over by the Hon. Vice-Chancellor. It has powers for general superintendence and control over all the institutions. The syndicate normally meets once a month.

#### **Senate**

The Senate, comprising of 83 members, under chairmanship of Hon. Vice-Chancellor, review the general policies of the University and suggests measures for improvement and development, from time to time. The Senate normally meets once in four months.

#### **Academic Council**

The Academic Council is the principal academic body of the University and has powers to coordinate and exercise general supervision over the academic programmes and policies of the University. It is also responsible for the up keeping of the academic standards of instruction, research, education, examination

etc. within the university. It is presided over by the Hon. Vice - Chancellor. The Academic Council normally meets once in four months.

### **Other Statutory Bodies**

Other Statutory Bodies include the Faculties, Board of Studies, Departmental/School Councils, Planning Committee, Finance Committee, Staff Council and the University Appellate Tribunal.

### **Board of Studies**

Out of the 10 Faculties in the University, School of Engineering comes under the Faculty of Engineering, headed by the Dean (Engineering). The five Boards of Studies under the Faculty of Engineering are as under.

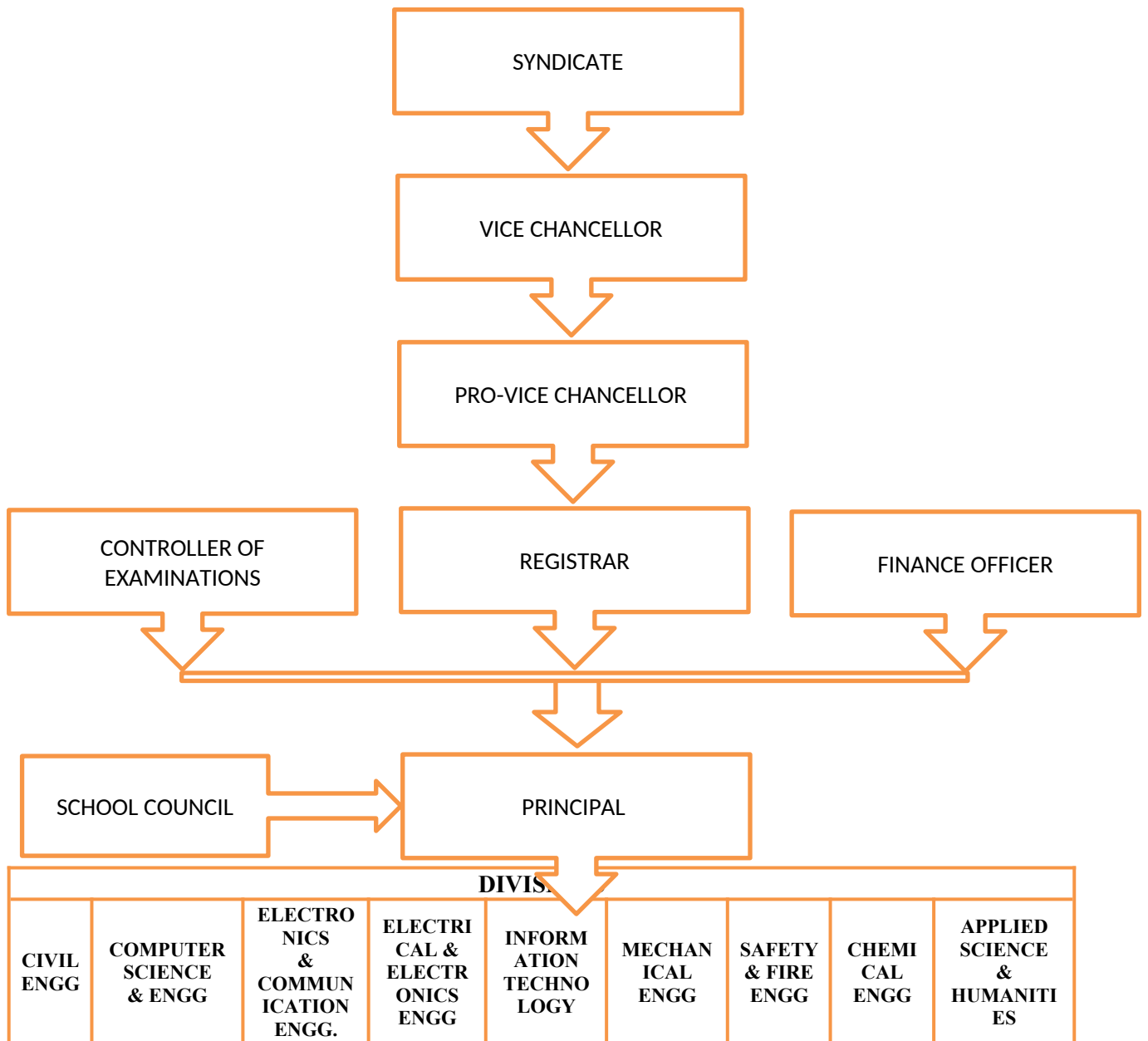
- a. Electrical & Electronics Engineering, Electronics & Communication Engineering
- b. Civil Engineering
- c. Mechanical & Marine Engineering
- d. Chemical & Safety & Fire Engineering
- e. Computer Science and Engineering & Information Technology

The Boards of Studies are responsible for the overall formulation of syllabus, its revision and related activities of various programmes under its purview.

### **School Council**

All permanent faculty members in School of Engineering are members of the School Council. The School Council decides and recommends all the administrative/academic/financial matters of the School. Principal is the Chairman and a Senior Professor is the Secretary of the School Council.

## ORGANISATIONAL CHART AND PROCESSES



- ~~Members of the Board and their brief background~~
- ~~Members of Academic Advisory Body~~
- Frequency of the Board Meeting and Academic Advisory Body-**table to be prepared**

Sl.No.	Name of the Board	Frequency of meeting
1	Syndicate	Once a month
2	Senate	Once in four month
3	Academic Council	Once in four month

• ~~Organizational chart and processes~~

- **Nature and Extent of involvement of Faculty and students in academic affairs/improvements**

Role of a faculty -

- Coordinator –Class Coordinator
- Mentor - One faculty for every 25 students
- Delivering lectures, remedial classes, supervising research, innovation, entrepreneurship and incubation (start-ups), capstone projects, dissertations etc.
- Acting as members of various academic and administrative bodies
- Coordinating the activities of various students clubs, co-curricular and extra- curricular activities

Role of students –

- Members of class committees.
- Student members of Syndicate, Senate, Academic Council.

- **Mechanism/ Norms and Procedure for democratic/ good Governance**

Policy and other important decisions are taken by various bodies like the Syndicate, Senate , School Council

- **Student Feedback on Institutional Governance/ Faculty performance**

Faculty performance-Collecting feedback from the students at the end of every semester

[Student Feedback on Institutional Governance/ Faculty performance](#)

- **Grievance Redressal mechanism for Faculty, staff and students**

**Grievance Redressal Mechanism for faculty and staff**

Grievance Redressal mechanism for students

Grievance cell is functioning in the Cochin University of Science and Technology in two levels to redress the complaints received from the students.

[Institutional \(CUSAT\) Student Grievance Redressal Committee](#)

Establishment of Grievance Redressal Committee in the Institution.

[Departmental \(SoE\) Student Grievance Redressal Committee](#)

- Establishment of Anti Ragging Committee  
[Anti-Ragging Committee](#)
- Establishment of Anti Narcotics Committee  
[Anti-Narcotic Club](#)
- Establishment of Online Grievance Redressal Mechanism

[Online Students' Grievance Redressal Portal](#)

**To be updated in the CUSAT portal**

- Establishment of Internal Complaint Committee (ICC)  
In accordance with the UGC(Prevention, Prohibition and redressal of sexual harassment women Employees and students in Higher Educational Institutions) regulation, 2015 was implemented in the university vide  
[Internal Complaints Committee](#)
- Establishment of Committee for SC/ST  
[SC/ST Committee](#)
- Internal Quality Assurance Cell
- Cochin University of Science and Technology reconstituted Internal Quality Assurance Cell (IQAC)  
[IQAC- SOE](#)

**6. Programmes**

- Name of Programmes approved by AICTE

Programme Name	Year of commencement	Sanctioned Intake	Lateral entry intake
<b>Full Time B. Tech Programmes (4 year programmes)</b>			
Civil Engineering	1995	90	9
Computer Science and Engineering	1995	90	9
Electronics and Communication Engineering	1995	90	9
Electrical & Electronics Engineering	2003	60	6
Information Technology	1995	90	9
Mechanical Engineering	1995	90	9
Safety & Fire Engineering	1996	60	6

<b>Full Time M Tech Programmes (2 year Programmes)</b>			
<b>Programme Name</b>	<b>Year of commencement</b>	<b>Sanctioned Intake</b>	<b>Remarks</b>
Mechanical Engineering (Specialization in Thermal Engineering)	2012	18	-
Civil Engineering (Specialization in Geotechnical Engineering)	2012	18	
Civil Engineering (Specialization in Structural Engineering)	2021	18	
Electronics and Communication Engineering (Specialization in Wireless Technology)	2013	18	
Information Technology (Specialization in Software Systems)	2013	18	Applied for Closure in 2023-24
Industrial Safety (Specialization in Health, Safety and Environment Management)	2016	18	
Computer Science and Engineering(Specialization Network Computing)	2016	18	Applied for Closure in 2023-24
<b>Part Time M. Tech Programmes</b>			
Chemical Engineering (Process Engineering)	1978	13	-
Civil Engineering (Construction Engineering and Management)	1978	13	-
Electrical Engineering (Power Electronics)	1978	15	-
Mechanical Engineering (Production Engineering)	1978	18	-

• **Name of Programmes Accredited by NBA**

B.TECH. CIVIL ENGINEERING

B.TECH.COMPUTER SCIENCE AND ENGINEERING

B.TECH.ELECTRICAL AND ELECTRONICS ENGINEERING

B.TECH.ELECTRONICS AND COMMUNICATIONS ENGINEERING

B.TECH.INFORMATION TECHNOLOGY

B.TECH.MECHANICAL ENGINEERING

B.TECH.SAFETY AND FIRE ENGINEERING

• Status of Accreditation of the Courses

NBA Status of Under Graduate B.Tech Programmes						
Sl. No	Programme Name	Year of starting	Intake capacity	Status of NBA Accreditation (Accredited/ Not Accredited/ Applied)	Type of Accreditation (New/ Renewal-if the status is applied or accredited)	Accreditation upto (if accredited)
1	CIVIL ENGINEERING	1995	90	ACCREDITED	RE-ACCREDITED UNDER TIER-I CATEGORY	30.06.2025
2	COMPUTER SCIENCE AND ENGINEERING	1995	90	ACCREDITED	RE-ACCREDITED UNDER TIER-I CATEGORY	30.06.2025
3	ELECTRICAL & ELECTRONICS ENGINEERING	2003	60	ACCREDITED	RE-ACCREDITED UNDER TIER-I CATEGORY	30.06.2025
4	ELECTRONICS & COMMUNICATION ENGINEERING	1995	90	ACCREDITED	RE-ACCREDITED UNDER TIER-I CATEGORY	30.06.2025
5	INFORMATION TECHNOLOGY	1995	90	ACCREDITED	RE-ACCREDITED UNDER TIER-I CATEGORY	30.06.2025
6	MECHANICAL ENGINEERING	1995	90	ACCREDITED	RE-ACCREDITED UNDER TIER-I CATEGORY	30.06.2025
7	SAFETY & FIRE ENGINEERING	1996	60	ACCREDITED	RE-ACCREDITED UNDER TIER-I CATEGORY	30.06.2025

NBA Status of Post Graduate MTech Programmes						
Sl. No	Programme Name	Year of starting	Intake capacity	Status of NBA Accreditation (Accredited/ Not Accredited/ Applied/ Waiting for Expert visit)	Type of Accreditation (New/ Renewal-if the status is applied or accredited)	Accreditation upto (if accredited)
1	MECHANICAL ENGINEERING ( SPECIALIZATION IN THERMAL ENGINEERING)	2012	18	WAITING FOR THE EXPERT VISIT	Submitted SAR on 24th February 2020. (Application no. 4013-29_08_2019)	
2	CIVIL ENGINEERING ( SPECIALIZATION IN GEOTECHNICAL ENGINEERING)	2012	18	WAITING FOR THE VISIT	Submitted SAR on 24th February 2020. (Application no. 4013-29_08_2019)	.....
3	Electronics and Communication Engineering	2013	18	APPLIED FOR WITHDRAWAL	Submitted SAR on 24th February 2020.	.....

	(Specialization in Wireless Technology)				(Application no. 4013-29_08_2019)	
4	Industrial Safety (Specialization in Health, Safety and Environment Management)	2016	18	WAITING FOR THE VISIT	Submitted SAR on 24th February 2020. (Application no. 4013-29_08_2019)	.....
5	Civil Engineering (Specialization in Structural Engineering)	2021	18	N.A		.....
6	Information Technology (Specialization in Software Systems)	2013	18	N.A	.....	PROGRAMME CLOSED
7	Computer Science and Engineering (Specialization Network Computing)	2016	18	N.A	.....	PROGRAMME CLOSED

Total number of programmes	Number of programmes accredited by NBA	Number of programmes applied for accreditation	Number of Not applicable for NBA Accreditation
14	7	4	3

- Total number of Courses : 14
- No. of Courses for which applied for Accreditation : 3
- Status of Accreditation — Preliminary/ Applied for SAR and results awaited/ Applied for SAR and visits completed/ Results of the visits awaited/ Rejected/ Approved for ... Courses (specify the number of courses)
  - For each Programme the following details are to be given (Preferably in Tabular form):
  - Name
  - Number of seats
  - Duration
  - Cut off marks/rank of admission during the last three years
  - Fee (as approved by the state government)

Sl. No	Name of the Programme	Approved intake	Duration (Years)	<a href="#">Cut off marks/rank of admission during the last three years</a>	<a href="#">Fee</a>
1	B.Tech. Civil Engineering	90	4	10 Each for PCM in CAT rank	
2	B.Tech. Computer Science and Engineering	90	4	10 Each for PCM in CAT rank	



3	B.Tech.Electronics and Communication Engineering	90	4	10 Each for PCM in CAT rank	
4	B.Tech.Electrical & Electronics Engineering	60	4	10 Each for PCM in CAT rank	
5	B.Tech.Information Technology	90	4	10 Each for PCM in CAT rank	
6	B.Tech.Mechanical Engineering	90	4	10 Each for PCM in CAT rank	
7	B.Tech.Safety & Fire Engineering	60	4	10 Each for PCM in CAT rank	
8	M.Tech. Mechanical Engineering (Specialization in Thermal Engineering)	18	2		
9	M.Tech. Civil Engineering (Specialization in Geotechnical Engineering)	18	2		
10	M.Tech. Civil Engineering (Specialization in Structural Engineering)	18	2		
11	M.Tech. Electronics and Communication Engineering (Specialization in Wireless Technology)	18	2		
13	M.Tech. Information Technology (Specialization in Software Systems)	18	2		
14	M.Tech. Industrial Safety (Specialization in Health, Safety and Environment Management)	18	2		
15	M.Tech. Computer Science and Engineering(Specialization Network Computing)	18	2		

- **Placement Facilities**

Placement Cell caters for enhancing not only the employability skills of the passing out CUSATians but also the overall development of their personality. PC organizes on campus and off campus recruitments and pre-placement training programmes in Aptitude test, Group Discussions, Interviews and Presentation skills in collaboration with TEQIP and core departments. Mock Interviews and GDs are conducted on a regular basis so as to equip final and pre-final students to face the challenges of the recruitment scenario. Close on the heels of placement drives, the Placement Assistance Cell makes an evaluation of the performance of our students. This objective appraisal enables us to identify strengths and weakness of the candidates and select the strategies for improvement. Besides, there are intensive supportive measure for the rejected candidates. The Placement cell in School of Engineering is very active with the participant of Student representative as well from the guidance of the placement officer Dr. Jacob Elias. The School

has nearly 70% placement for its final year students. Nearly 50 to 70 companies are visiting the campus for placement activities.

For further details : [Placement Facilities](#)

- **Campus placement in last three years with minimum salary ,maximum salary and average salary**
- Name and duration of Programme(s)having Twinning and Collaboration with Foreign University(s) and being run in the same Campus along with status of their AICTE approval. If there is Foreign Collaboration, give the following details:

• **Details of the Foreign University**

Sl- No	Name of the University	Address	Website	Accreditation status of the University in its Home Country	Ranking of the University in the Home Country
1	Louisiana state University	Baton Rouge, Louisiana	<a href="https://www.lsu.edu/">https://www.lsu.edu/</a>		
	Malsue, Shimane University	Japan	<a href="https://www.shimane-u.ac.jp/en/">https://www.shimane-u.ac.jp/en/</a>		
	Multimedia University	Malasia	<a href="https://www.mmu.edu.my/">https://www.mmu.edu.my/</a>		
	NERSC	Norway	<a href="https://www.nerse.no">https://www.nerse.no</a>		
	Niigata University	Japan	<a href="https://www.niigata-u.ac.jp/en/">https://www.niigata-u.ac.jp/en/</a>		
	Nippon kaiji Kyokai	Japan	<a href="https://www.classnk.or.jp/hp/en/">https://www.classnk.or.jp/hp/en/</a>		
	Old Dominion University	Norfolk, Virginia	<a href="https://www.odu.edu/">https://www.odu.edu/</a>		
	<b>PRISE</b>	<b>Srilanka</b>	<a href="https://www.prisrilanka.com/">https://www.prisrilanka.com/</a>		
	Shimane University	Japan	<a href="https://www.shimane-u.ac.jp/en/">https://www.shimane-u.ac.jp/en/</a>		
	University of Gothenburg	Sweden	<a href="https://www.gu.se/en">https://www.gu.se/en</a>		
	University of Maribor	Slovenia	<a href="https://www.um.si/en/home-page/">https://www.um.si/en/home-page/</a>		
	University of Rennes	France	<a href="https://www.univ-rennes1.fr/en">https://www.univ-rennes1.fr/en</a>		
	University of Salerno	Italy	<a href="https://web.unisa.it/en/home">https://web.unisa.it/en/home</a>		

- Whether the degree offered is equivalent to an Indian Degree? If yes, the name of the agency which has approved equivalenee. If no, implications for students in terms of pursuit of higher studies in India and abroad and job both within and outside the country
- Nature of Collaboration
- Conditions of Collaboration
- Complete details of payment a student has to make to get the full benefit of Collaboration
  - For each Programme Collaborated provide the following:
- Programme Focus

- Number of seats
- Admission Procedure
- Fee (as approved by the state government)
- Placement Facility
- Placement Records for last three years with minimum salary, maximum salary and average salary
- Whether the Collaboration Programme is approved by AICTE? If not whether the Domestic/ Foreign University has applied to AICTE for approval

## 7. Faculty

- Course/Branch wise list Faculty members:

**Faculty-Civil Engineering**

**Faculty-Computer Science & Engineering**

**Faculty- Electronics & Communication Engineering**

**Faculty- Electrical & Electronics Engineering**

**Faculty- Information Technology**

**Faculty - Mechanical Engineering**

**Faculty- Safety & Fire Engineering**

**Faculty - Applied Science & Humanities**

- Permanent Faculty
- Adjunct Faculty
- Permanent Faculty: Student Ratio
- Number of Faculty employed and left during the last three years

## 8. Profile of Vice Chancellor/ Director/ Principal/Faculty

**Vice-Chancellor**

**Principal**

**Faculty-Civil Engineering**

**Faculty-Computer Science & Engineering**

**Faculty- Electronics & Communication Engineering**

**Faculty- Electrical & Electronics Engineering**

**Faculty- Information Technology**

**Faculty - Mechanical Engineering**

**Faculty- Safety & Fire Engineering**

**Faculty - Applied Science & Humanities**

- For each Faculty give a page covering with Passport size photograph

- Name

- Date of Birth

- Unique ID
- Education Qualifications
- **Work Experience**
- Teaching
- Research
- Industry
- others
- Area of Specialization
- Courses taught at Diploma/ Post Diploma/ Under Graduate/ Post Graduate/ Post Graduate Diploma Level
- **Research guidance(Number of Students)**
- No. of papers published in National/ International Journals/ Conferences
- Master (Completed/Ongoing)
- Ph.D. (Completed/Ongoing)
- Projects Carried out
- Patents (Filed & Granted)
- Technology Transfer
- Research Publications (No. of papers published in National/International Journals/Conferences)
- No. of Books published with details (Name of the book, Publisher with ISBN, year of publication, etc.)

## 9. Fee

- Details of Fee, as approved by State Fee Committee, for the Institution
- Time schedule for payment of Fee for the entire Programme
- No. of Fee waivers granted with amount and name of students
- Number of scholarship offered by the Institution, duration and amount
- Criteria for Fee waivers/scholarship
- Estimated cost of Boarding and Lodging in Hostels
- Any other fee please specify

## 10. Admission

- Number of seats sanctioned with the year of approval

11. Programme Name	Year of commencement	Sanctioned Intake	Lateral entry intake
<b>Full Time B. Tech Programmes (4 year programmes)</b>			
Civil Engineering	1995	90	9
Computer Science and Engineering	1995	90	9
Electronics and Communication Engineering	1995	90	9
Electrical & Electronics Engineering	2003	60	6
Information Technology	1995	90	9
Mechanical Engineering	1995	90	9

Safety & Fire Engineering	1996	60	6
---------------------------	------	----	---

<b>Full Time M Tech Programmes (2 year Programmes)</b>			
<b>Programme Name</b>	<b>Year of commencement</b>	<b>Sanctioned Intake</b>	<b>Remarks</b>
Mechanical Engineering (Specialization in Thermal Engineering)	2012	18	-
Civil Engineering (Specialization in Geotechnical Engineering)	2012	18	
Civil Engineering (Specialization in Structural Engineering)	2021	18	
Electronics and Communication Engineering (Specialization in Wireless Technology)	2013	18	
Information Technology (Specialization in Software Systems)	2013	18	Applied for Closure in 2023-24
Industrial Safety (Specialization in Health, Safety and Environment Management)	2016	18	
Computer Science and Engineering(Specialization Network Computing)	2016	18	Applied for Closure in 2023-24
<b>Part Time M. Tech Programmes</b>			
Chemical Engineering (Process Engineering)	1978	13	-
Civil Engineering (Construction Engineering and Management)	1978	13	-
Electrical Engineering (Power Electronics)	1978	15	-
Mechanical Engineering (Production Engineering)	1978	18	-

- Number of Students admitted under various categories each year in the last three years  
[Student data for last three years](#)
- Number of applications received during last two years for admission under Management Quota and number admitted- N.A

## **12. Admission Procedure**

Cochin University of Science and Technology follows the “Common Admission Test (CAT)” scheduled every year and is conducted in various centers of the country.

### **CUSAT ADMISSIONS**

- Mention the admission test being followed, name and address of the Test Agency/State Admission Authorities and its URL (website)
- Number of seats allotted to different Test Qualified candidate separately (AIEEE/ CET (State conducted test/ University tests/ CMAT/ GPAT)/ Association conducted test etc.)

• ~~Calendar for admission against Management/vacant seats:~~

- ~~Last date of request for applications~~

- Last date of submission of applications
- Dates for announcing final results
- Release of admission list (main list and waiting list shall be announced on the same day)
- Date for acceptance by the candidate (time given shall in no case be less than 15 days)
- Last date for closing of admission
- Starting of the Academic session
- The waiting list shall be activated only on the expiry of date of main list
- The policy of refund of the Fee, in case of withdrawal, shall be clearly notified

### **13. Criteria and Weightages for Admission**

- Describe each criterion with its respective weightages i.e. Admission Test, marks in qualifying examination etc.
- Mention the minimum Level of acceptance, if any
- Mention the cut-off Levels of percentage and percent ile score of the candidates in the admission test for the last three years
- Display marks scored in Test etc. and in aggregate for all candidates who were admitted

### **14. List of Applicants**

- List of candidate whose applications have been received along with percentile/percentages core for each of the qualifying examination in separate categories for open seats. List of candidate who have applied along with percentage and percentile score for Management quota seats (merit wise)

### **15. Results of Admission Under Management seats/Vacant seats**

- Composition of selection team for admission under Management Quota with the brief profile of members (This information be made available in the public domain after the admission process is over)
- Score of the individual candidate admitted arranged in order of merit
- List of candidate who have been offered admission
- Waiting list of the candidate in order of merit to be operative from the last date of joining of the first list candidate
- List of the candidate who joined within the date, vacancy position in each category before operation of waiting list

### **16. Information of Infrastructure and Other Resources Available**

- Number of Class Rooms and size of each
- Number of Tutorial rooms and size of each
- Number of Laboratories and size of each
- Number of Drawing Halls with capacity of each
- Number of Computer Centres with capacity of each
- Central Examination Facility, Number of rooms and capacity of each
- Online examination facility (Number of Nodes, Internet bandwidth, etc.)
- Barrier Free Built Environment for disabled and elderly persons
- Occupancy Certificate
- Fire and Safety Certificate
- Hostel Facilities
- **Library**

[SOE-Library](#)

## CUSAT- Library

- Number of Library books/ Titles/ Journals available(Programme-wise)
- List of online National/ International Journals subscribed
- E- Library facilities
- National Digital Library(NDL) subscription details
- **Laboratory and Workshop**
- List of Major Equipment/Facilities in each Laboratory/Workshop
- List of Experimental Setup in each Laboratory/Workshop
- **Computing Facilities**
- Internet Bandwidth
- Number and configuration of System
- Total number of system connected by LAN
- Total number of system connected by WAN
- Major software packages available
- Special purpose facilities available (Conduct of online Meetings/Webinars/Workshops, etc.)
- Facilities for conduct of classes/courses in online mode (Theory & Practical)
- Innovation Cell
- Social Media Cell
- Compliance of the National Academic Depository (NAD), applicable to PGCM/ PGDM Institutions and University Departments
- **List of facilities available**
- Games and Sports Facilities
- Extra-Curricular Activities
- Soft Skill Development Facilities
- **Teaching Learning Process**

### SOE- B.TECH & M.TECH SYLLUBUS

- Curricula and syllabus for each of the Programmes as approved by the University
- [Academic Calendar of the University](#)
- Academic Time Table with the name of the Faculty members handling the Course
- Teaching Load of each Faculty
- Internal Continuous Evaluation System and place
- Student's assessment of Faculty, System in place
- **For each Post Graduate Courses give the following:**
- Title of the Course
- Curricula and Syllabi
- Laboratory facilities exclusive to the Post Graduate Course
- **Special Purpose**
- Software, all design tools in case
- Academic Calendar and framework

## **17. Enrolment and placement details of students in the last 3years**

**Enrolment For 3 Years**

**Placement Data For 3 Years**

**18. List of Research Projects/ Consultancy Works**

- Number of Projects carried out, funding agency, Grant received
- Publications (if any) out of research in last three years out of masters projects
- **Industry Linkage**
- **MoUs with Industries (minimum3(10))**

**19. LoA and subsequent EoA till the current Academic Year**

**20. Accounted audited statement for the last three years**

**21. Best Practices adopted, if any**

**Note:** Suppression and/or misrepresentation of information shall invite appropriate penal action. The Website shall be dynamically updated with regard to Mandatory Disclosures

**Important Instructions:**

- Avoid putting personal information in public domain.
- The mandatory disclosure should be available freely to view/download to the public without any restrictions.
- LoA/EoA letters (since inception) should form part of the mandatory disclosure and complete mandatory disclosure document should be converted into a single PDF file and the URL (web-link) to be entered in the AICTE portal (under attachments tab).